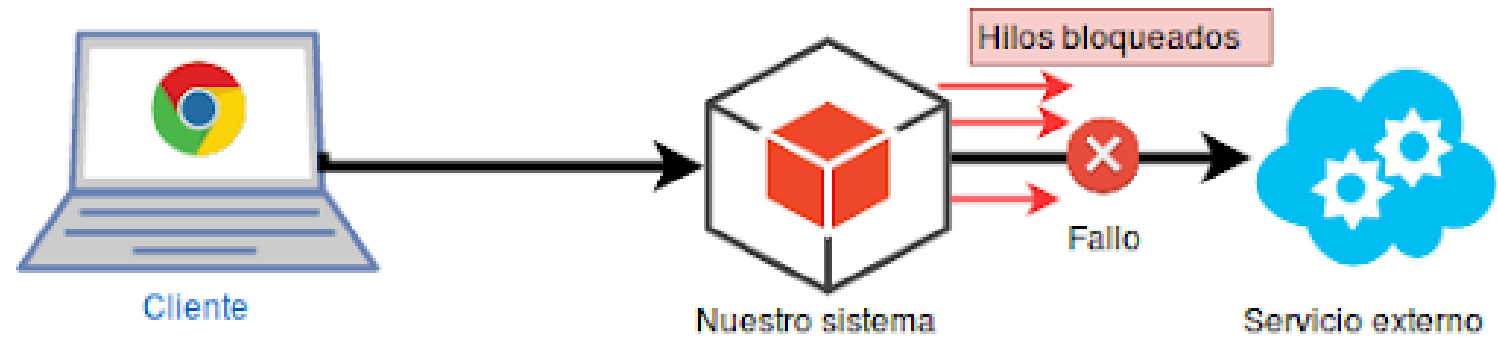
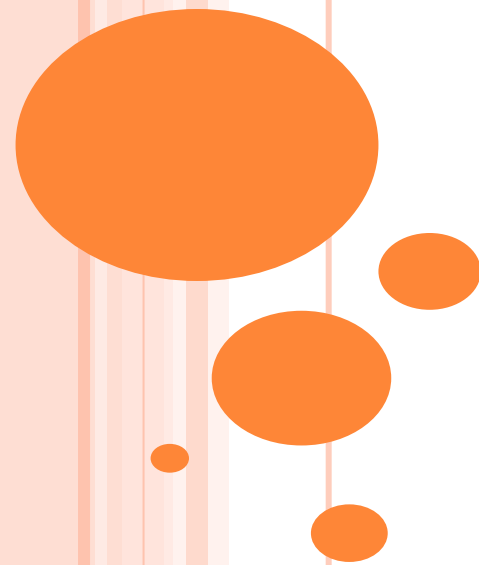


# CIRCUIT BREAKER

Candela Bobes Junquera – UO269948

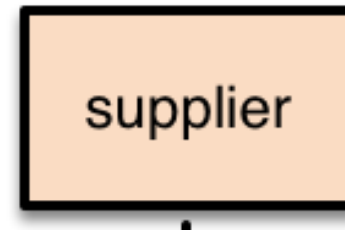
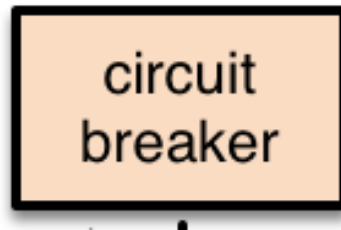
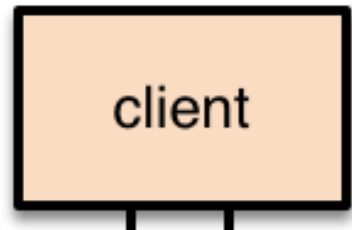
Diego Tomás Nosti – UO270497

# ¿QUÉ ES UN CIRCUIT BREAKER?

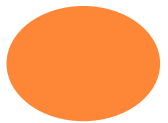
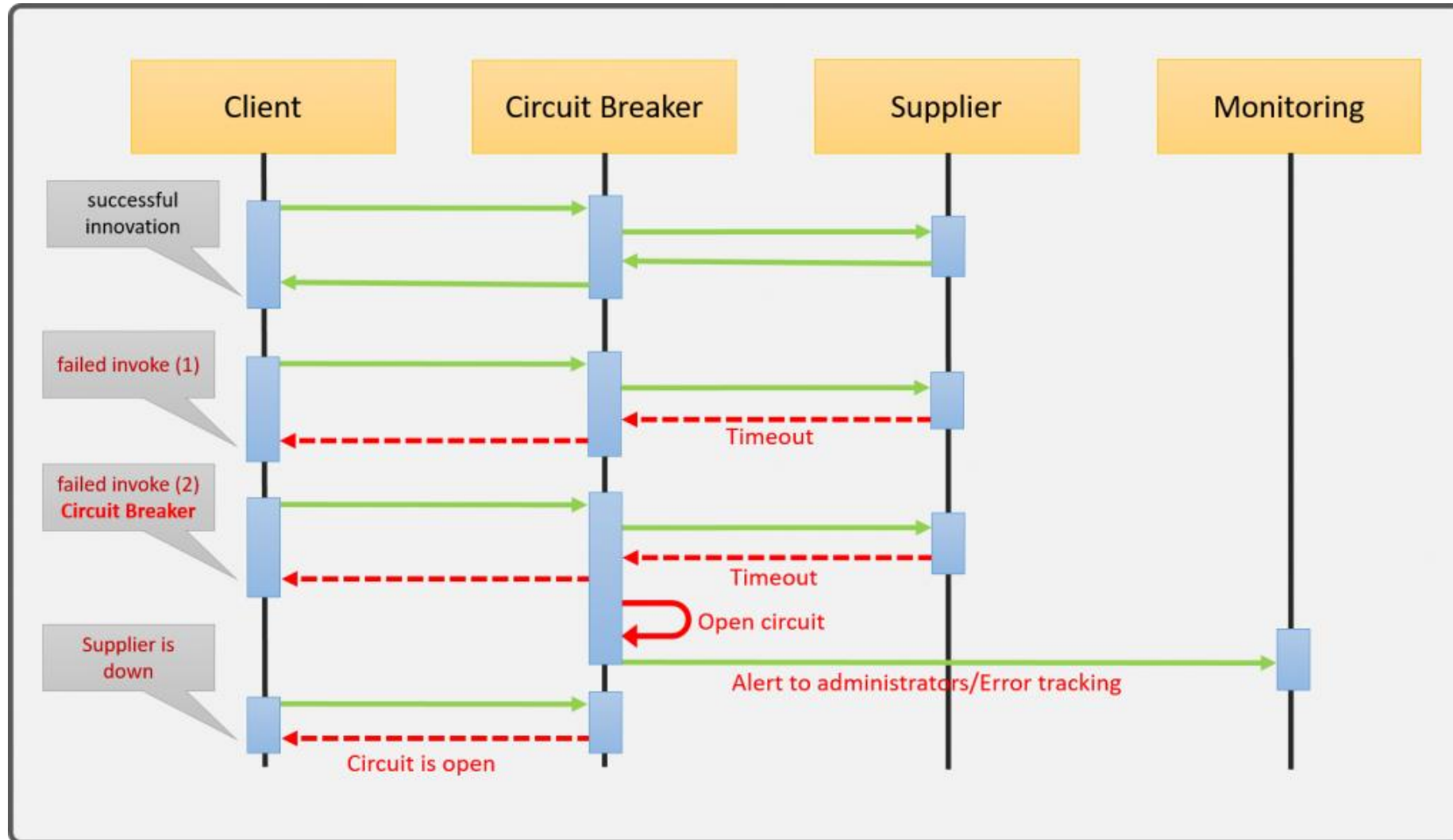


# ¿QUÉ ROLES INTERVIENEN?

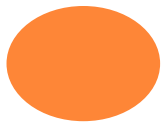
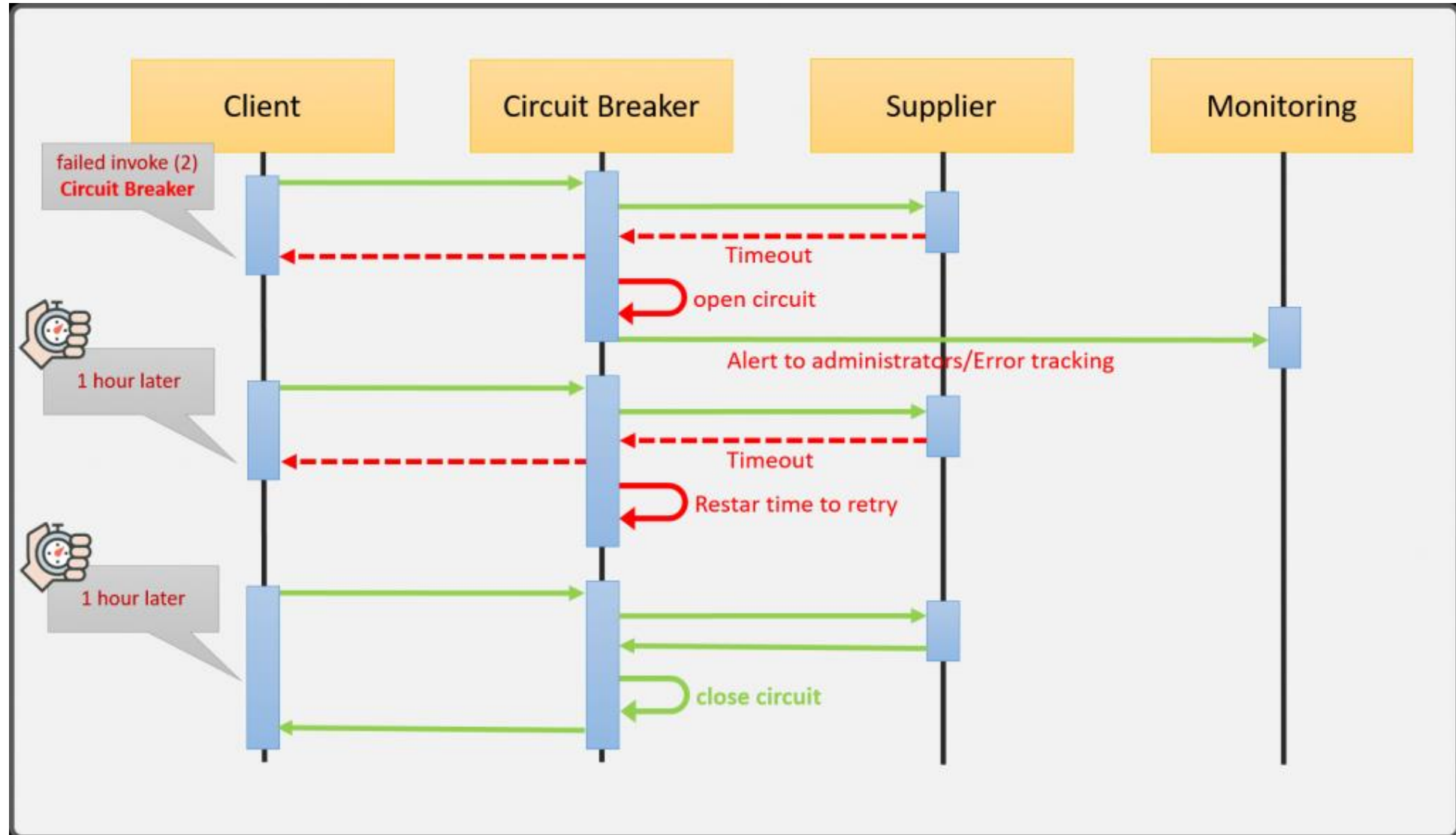
- Cliente
- Circuit Breaker
- Supplier



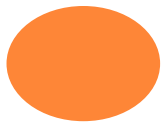
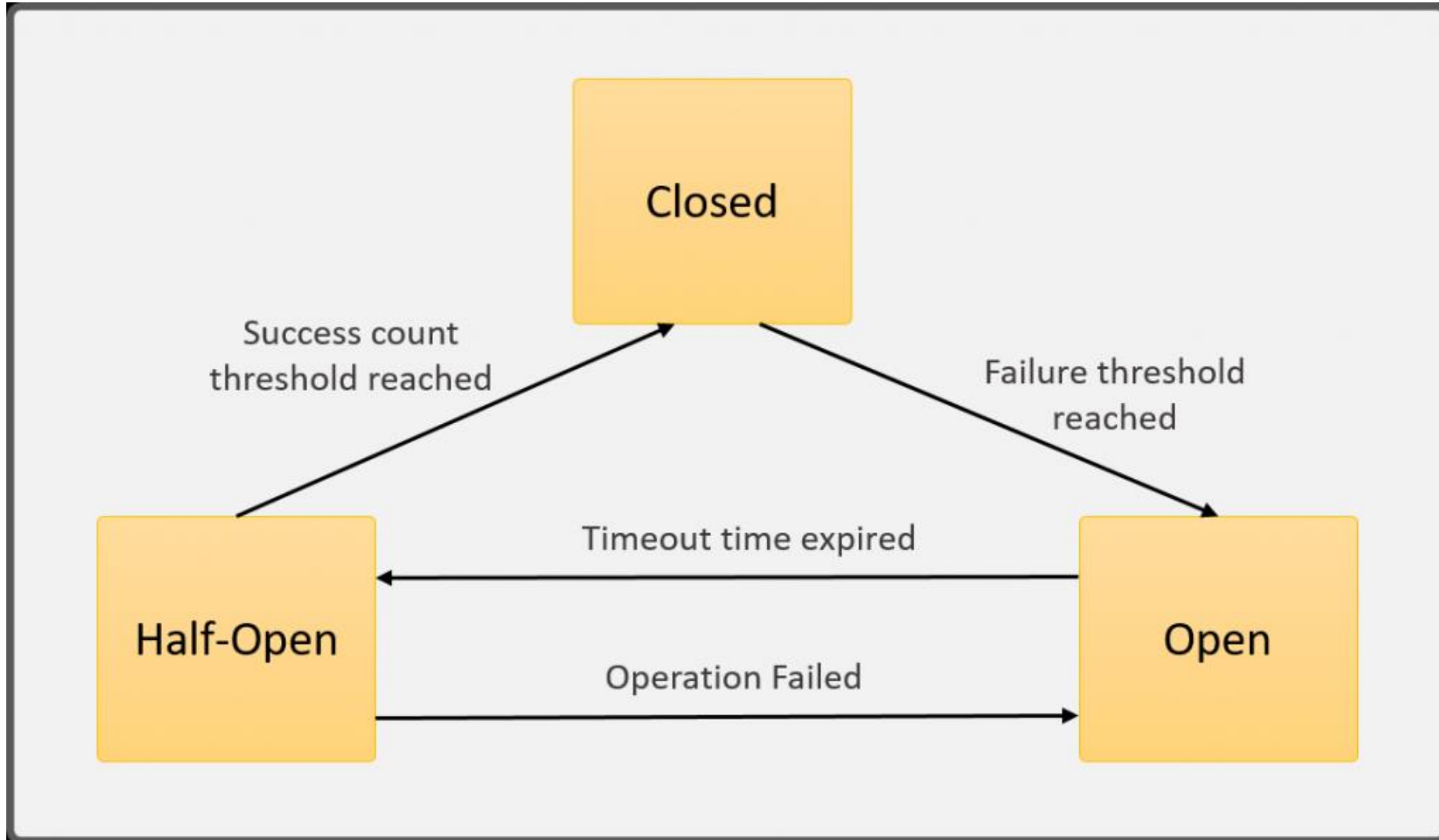
# FUNCIONAMIENTO



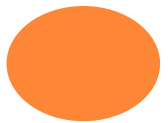
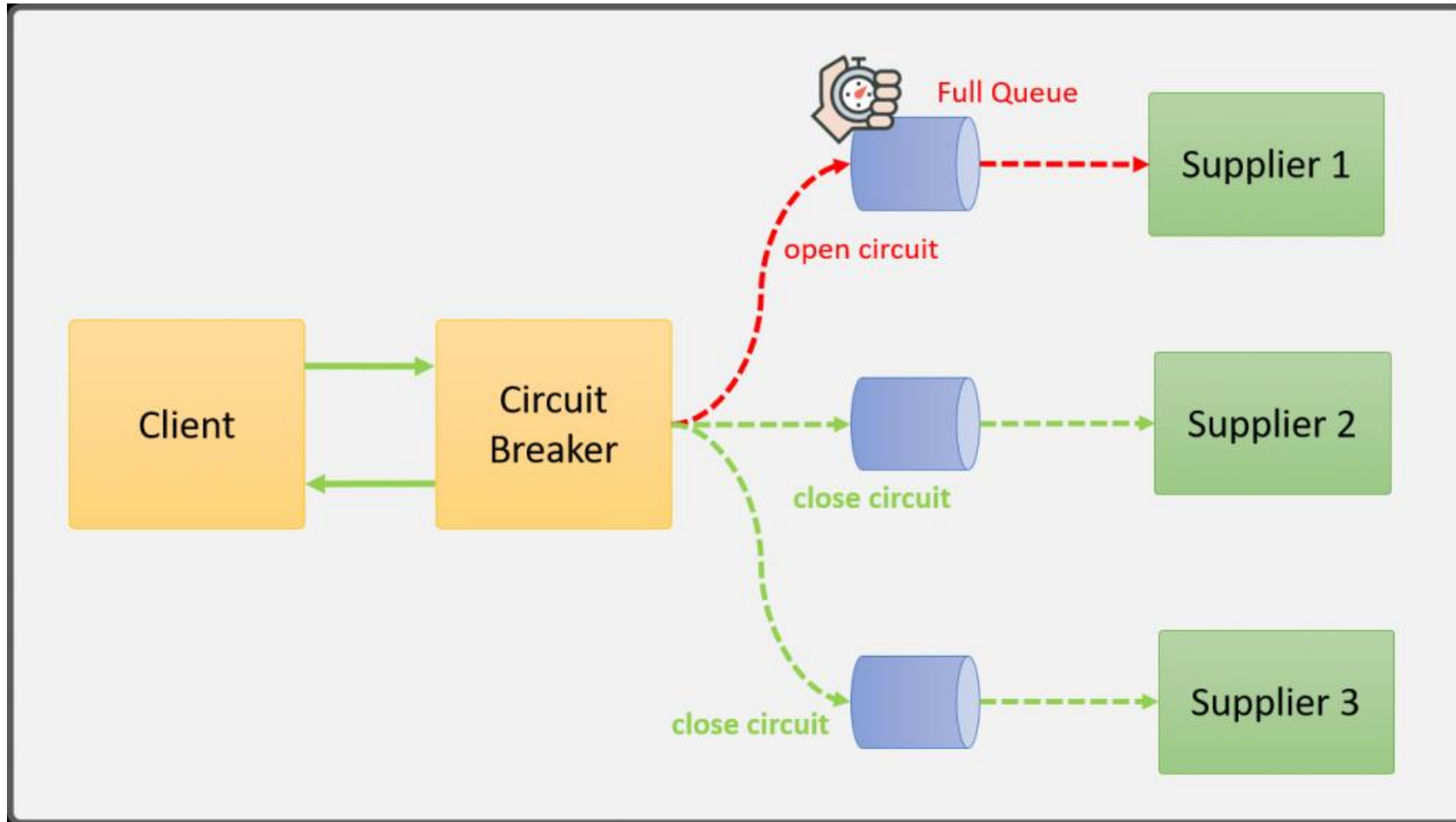
# FUNCIONAMIENTO



# CICLO DE VIDA



# ENTORNOS ASÍNCRONOS



# AJUSTE CUIDADOSO

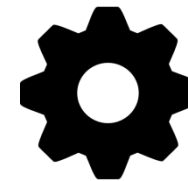
- Umbral de abertura



- Tiempo de abertura



- Entorno, endpoint y solicitud





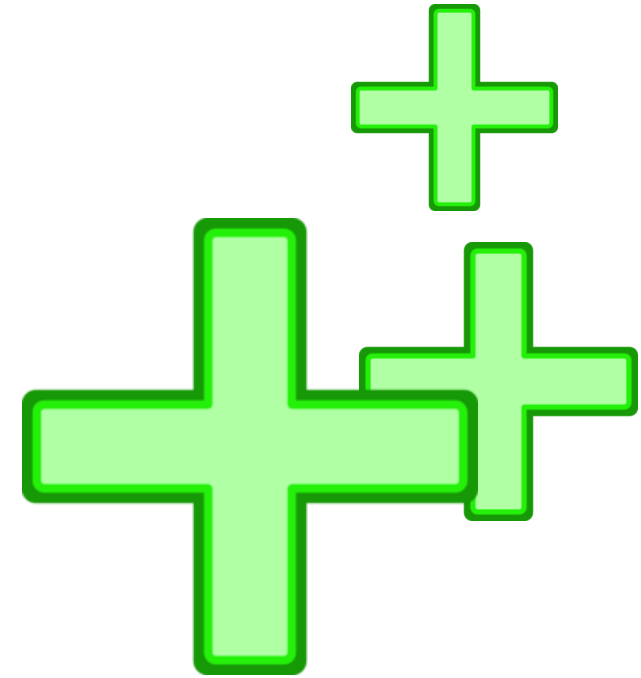
# MALOS AJUSTES

- Menos rendimiento
- Tiempo de inactividad
- Solicitudes confusas
- Errores nuevos







# BENEFICIOS Y RAZONES DE USO

- Fallo rápido
- Menos carga
- Lógica de reserva
- Seguimiento de estado



# PUNTOS A TENER EN CUENTA

- Bibliotecas 
- Errores 
- Términos cerrado/abierto 
- Ubicación 





# PREGUNTAS

