



Universidad de Oviedo



S O F T W A R E
A R C H I T E C T U R E

Software Architecture

Lab. 02

UML diagrams

PlantUML

Introduction to arc42 docs

2020-21

Jose Emilio Labra Gayo
Pablo González
Irene Cid
Paulino Álvarez

UML

Unified Modeling Language

Before UML there were several proposals

UML notation unifies them

Proposed by OMG (Object Management Group)

Current version UML 2.5.1 (2017)

Model = abstraction of a problem

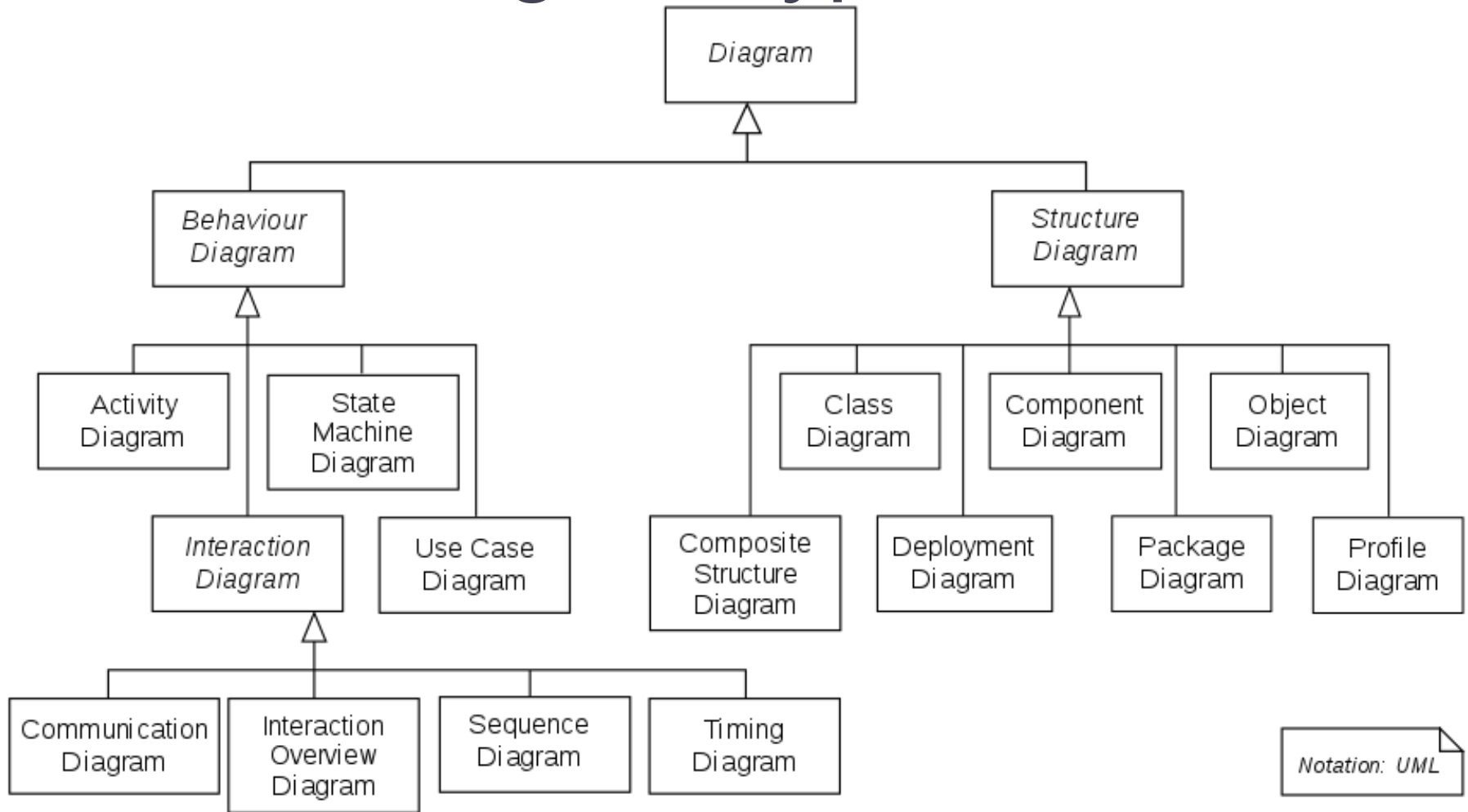
It can have different diagrams

Diagram = partial graphic representation of a model

OCL = Object Constraint Language

Constraints between objects using formal language

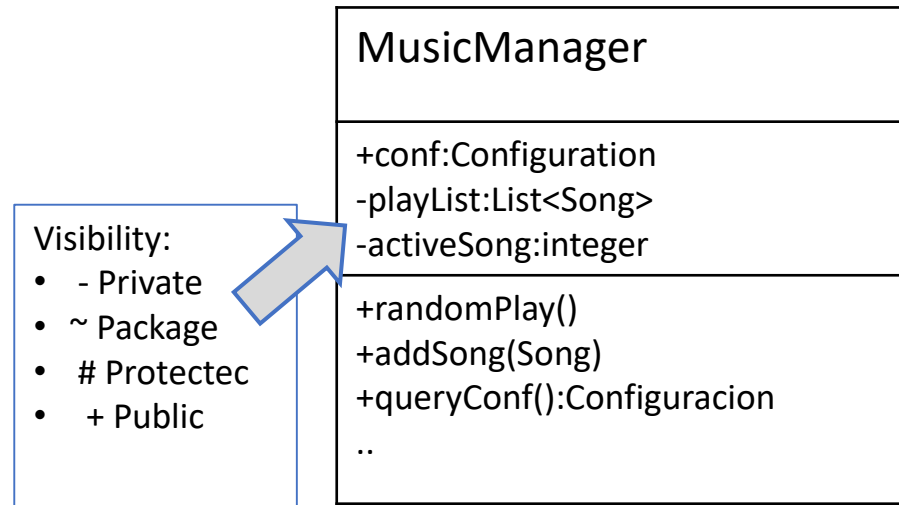
14 UML Diagram types



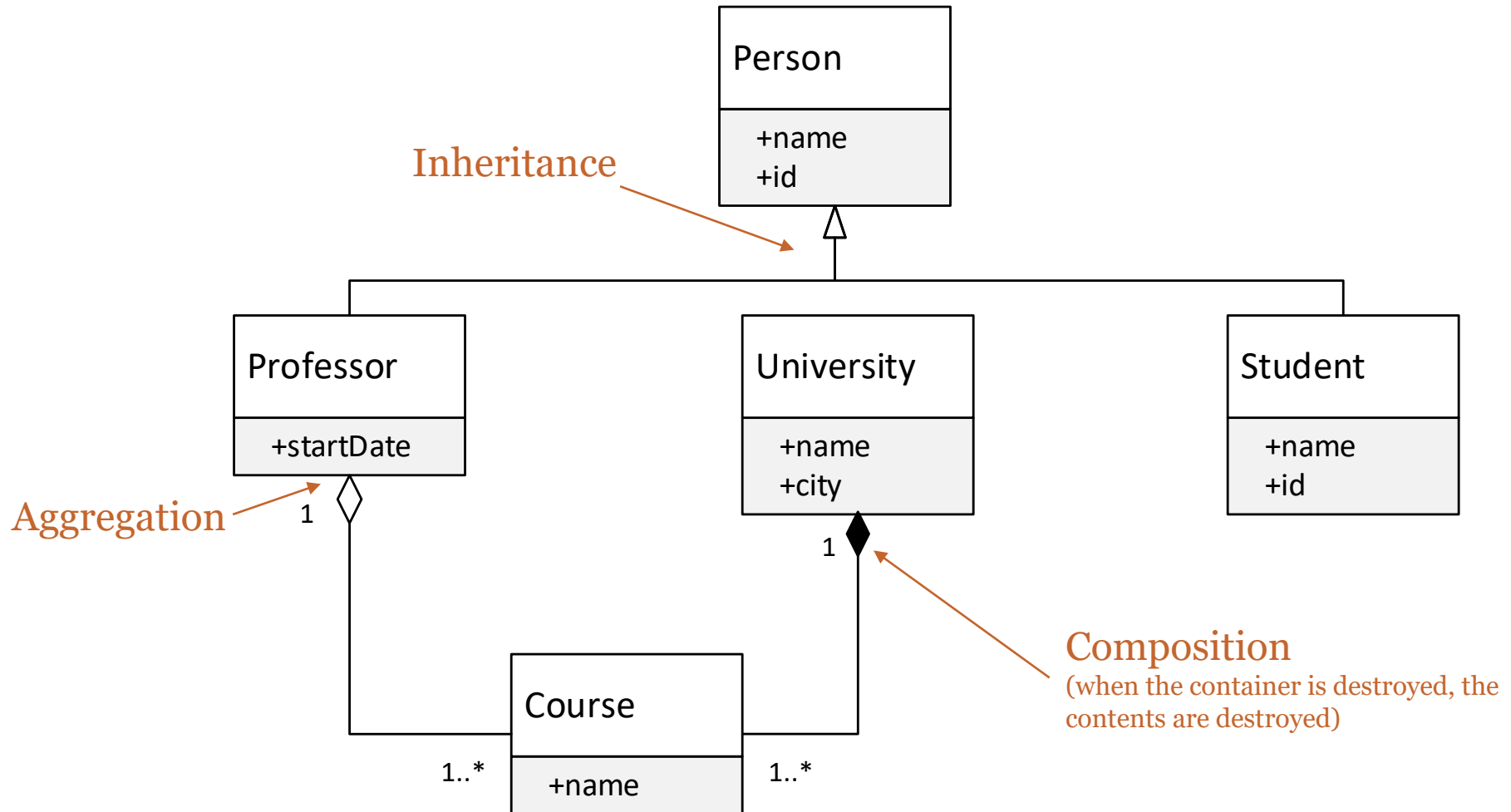
Notation: UML

Class diagrams

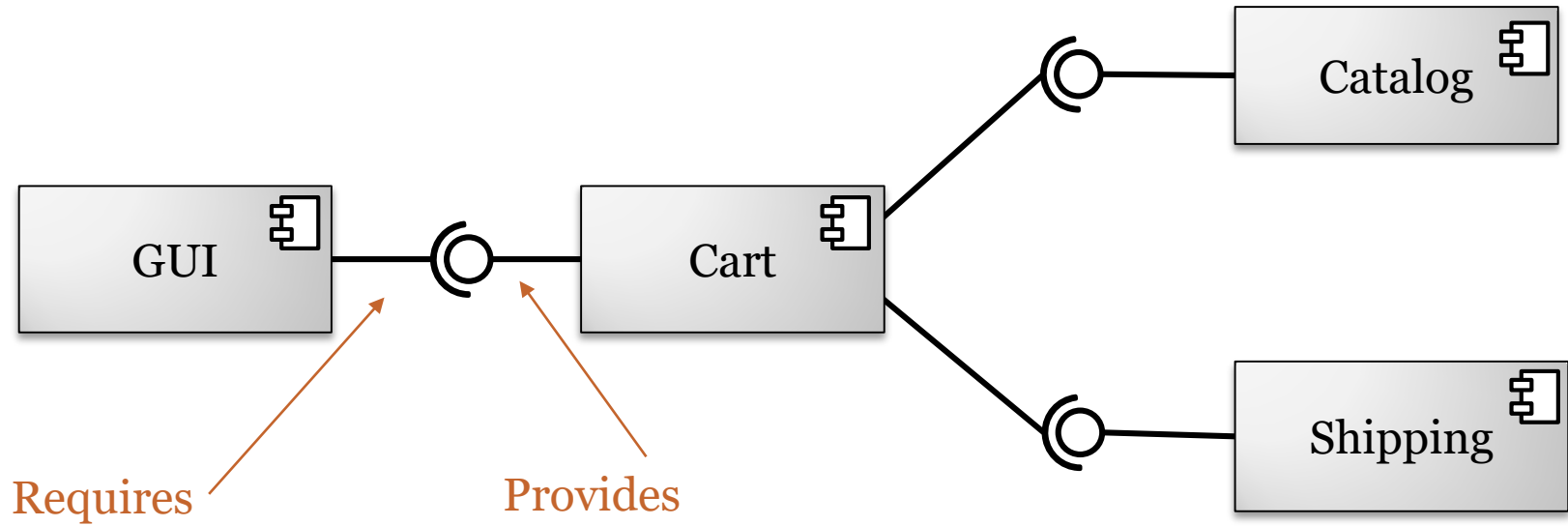
- Models the static part of the project, without taking into account the time aspect
- Explains the relationships between the different classes.
- Arc42:8-Concepts



Example



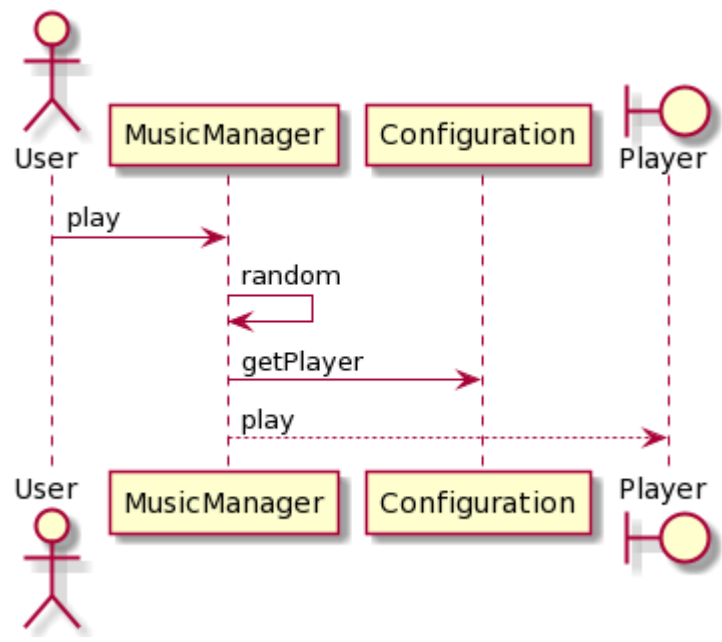
UML Component diagram



Sequence diagram

Models communication between some objects at a given time
 Objects can send two types of messages: synchronous or asynchronous

Arc42:6-RuntimeView



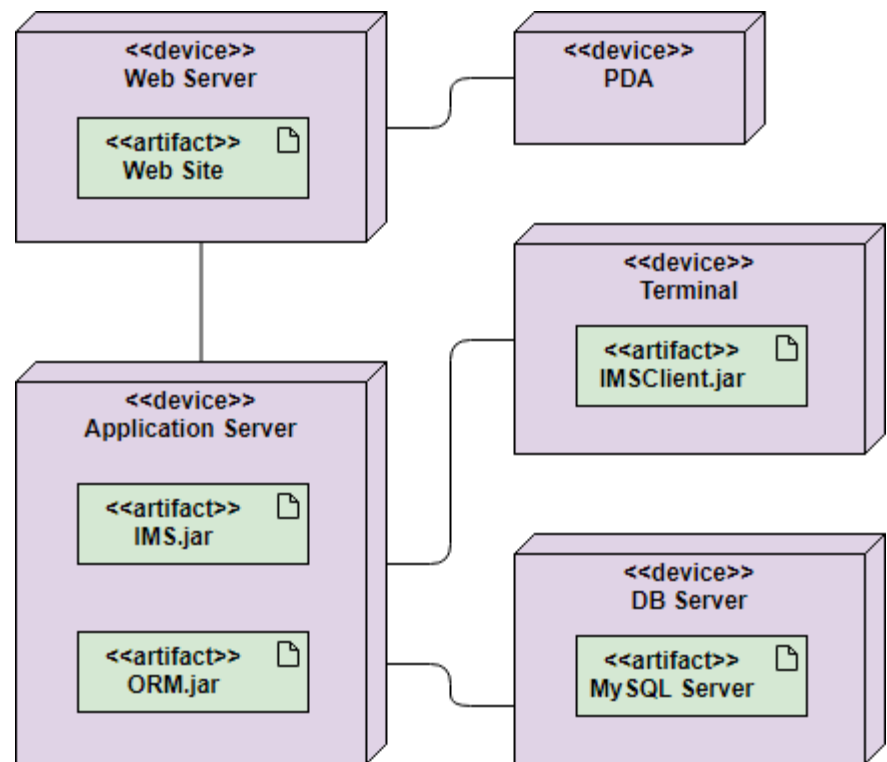
Deployment diagrams

Represents the final location of the components in an app

Elements:

Nodes , Components,
relationships

Arc42: 07.DeploymentView

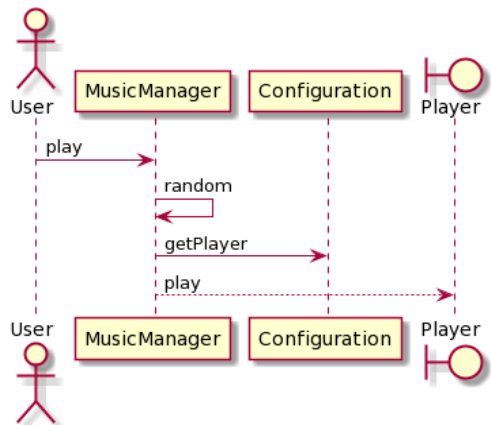


Text-based tools

PlantUML

```

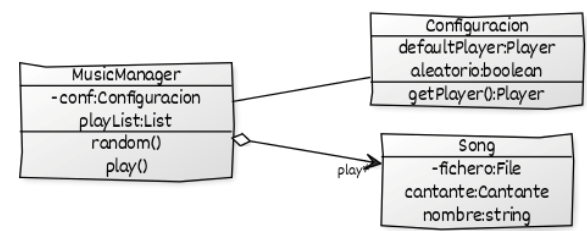
@startuml component
actor User
participant MusicManager
participant Configuration
boundary Player
User -> MusicManager: play
MusicManager -> MusicManager: random
MusicManager -> Configuration : getPlayer
MusicManager --> Player : play
@enduml
    
```



YUML

```

// Cool Class Diagram
[MusicManager|-conf:Configuracion;
playList:List |random();play()]
[MusicManager]<-play*>[Song|-
fichero:File;cantante:Cantante;nombree:
:string]
[MusicManager]-
[Configuracion|defaultPlayer:Player;a
leatorio:boolean|getPlayer():Player]
]
    
```



Drawing tools

Powerpoint

MsVisio

UMLet (<https://www.umlet.com/>)

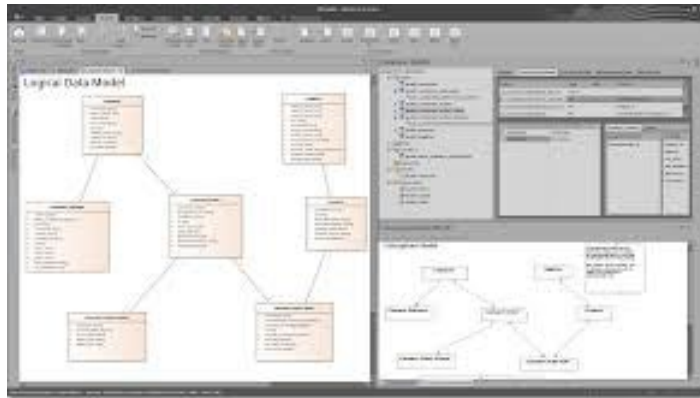
CASE tools

EnterpriseArchitect

Reverse Engineering with Java/C++

Oracle connection for relational databases

Word, HTML templates



MagicDraw

- Java based
- UML diagrams
- Reverse Engineering Java , C++

Visual Paradigm

- Commercial (student license)

Modelio

- Open source
- Java based
- Reverse Engineering Java , C++

Diagramming the architecture

Video:

<https://www.youtube.com/watch?v=wgpSdpny-0c>

Checklist:

<https://c4model.com/assets/software-architecture-diagram-review-checklist.pdf>

Arc42 templates

<https://arc42.org/>

Radarin already follows the template:

<https://radarin0webapp.herokuapp.com/docs/>

Generation of docs:

> npm run docs

End of presentation